



—
Your
Hobbit Hole
Awaits!

Athika Infrastructure

Building trust, luxury and a legacy of excellence.

We are proud to be Coimbatore's leading property developers, where quality and comfort take centre stage. Since our incorporation in 2009, we have continually delivered excellence in real estate, transforming acres of land into thriving communities.

our vision

To be a leader in real estate development by shaping vibrant, sustainable communities that improve the quality of life for future generations.

our mission

To create innovative, sustainable, and high-quality real estate developments that enhance communities and provide exceptional value for residents, businesses, and investors.



ANCIA



Enchanting World of Athika's Ancia

Athika's Ancia – India's first mud-house gated community at mettupalayam with each unit consisting of 22 cents. It's the perfect place for a holiday home or weekend retreat – a place where cozy meets whimsical and nature embraces the modern! Nestled into the lush, rolling hills of the Western Ghats, Ancia is the perfect retreat for those who crave a blend of the rustic charm embedded with modern opulence.



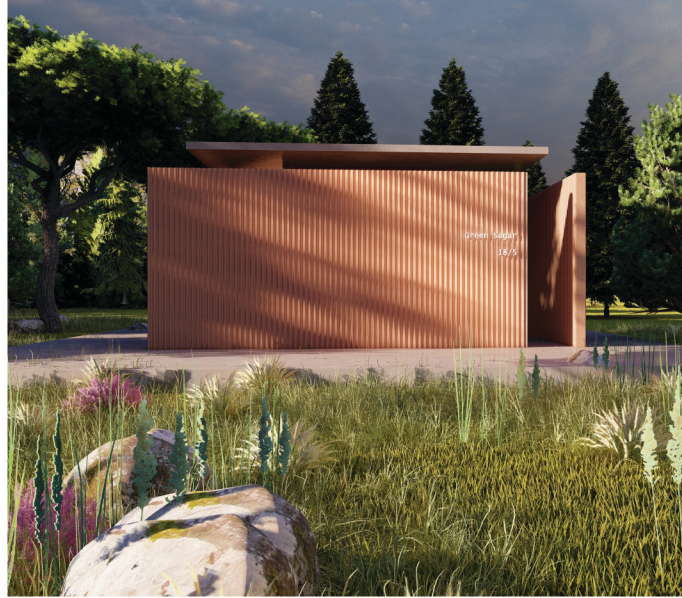
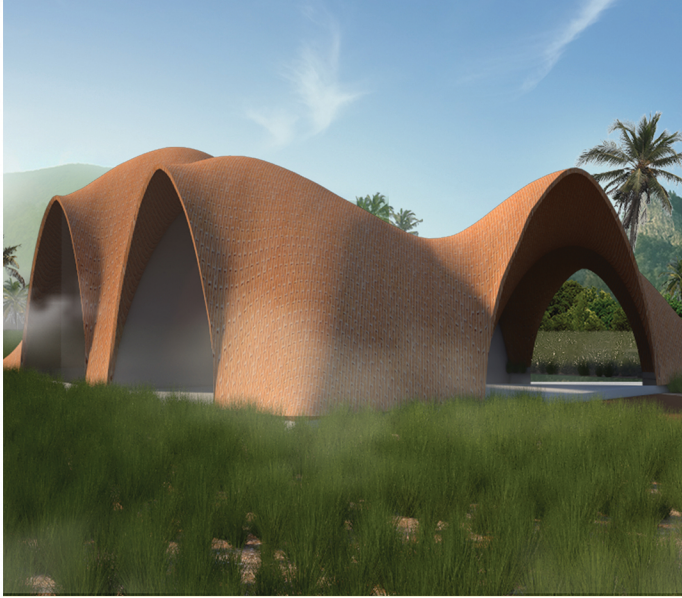
Rooted in nature, built for the future.

Ancia designed by International Award-winning firm - Earthscape Studio, and principal architect Petchimuthu Kennedy embodies sustainability by reducing carbon emissions & the use of concrete with lime and mud as eco-friendly alternatives, cutting concrete usage by 60%.

The design features curved walls, creating dynamic layered spaces, while lime plaster is used for flooring walls and furniture helping to regulate indoor temperature.

A central courtyard provides natural light and ventilation, while small vents expel hot air with sunlight playing through these openings. Natural mounds, formed from site-reused earth, further cool the space.

ANCIA



Eco-Friendly Design

Built seamlessly into the landscape, these homes are energy-efficient with minimal environmental footprint. Naturally insulated, keeping you warm in the winter and cool in the summer.



Charming Aesthetics

Circular doors, rustic timber accents and stone finishes that create a magical, storybook-like atmosphere. Lush green roofs blend with the surrounding environment offering a serene escape from the hustle of modern life.

ANCIA



Customizable Comfort

Interiors are designed to suit your style from cozy, cottage-core vibes to sleek, modern finishes, Open plan spaces, warm lighting and handcrafted woodwork create a harmonious balance between tradition and luxury.



Reconnect with Nature

Wake up to birdsong and the fragrance of wildflowers. Enjoy private gardens, tranquil walking paths and breathtaking views of rolling meadows and picturesque hills.





Amenities

- ~ 24 hour running water
- ~ 30 feet tar-top road
- ~ Rare herbal trees in the common corridor
- ~ Revenue generating trees in each plot
- ~ 10-year free maintenance for the trees and plants
- ~ Destination wedding venue in the future
- ~ CCTV surveillance around the clock
- ~ A well equipped clubhouse
- ~ Solar fencing
- ~ Solar street lights
- ~ Modern Kitchen, Spa like bathrooms and Mini Bar

Size Options

From quaint single-bedroom retreats to spacious family homes.

Sustainability

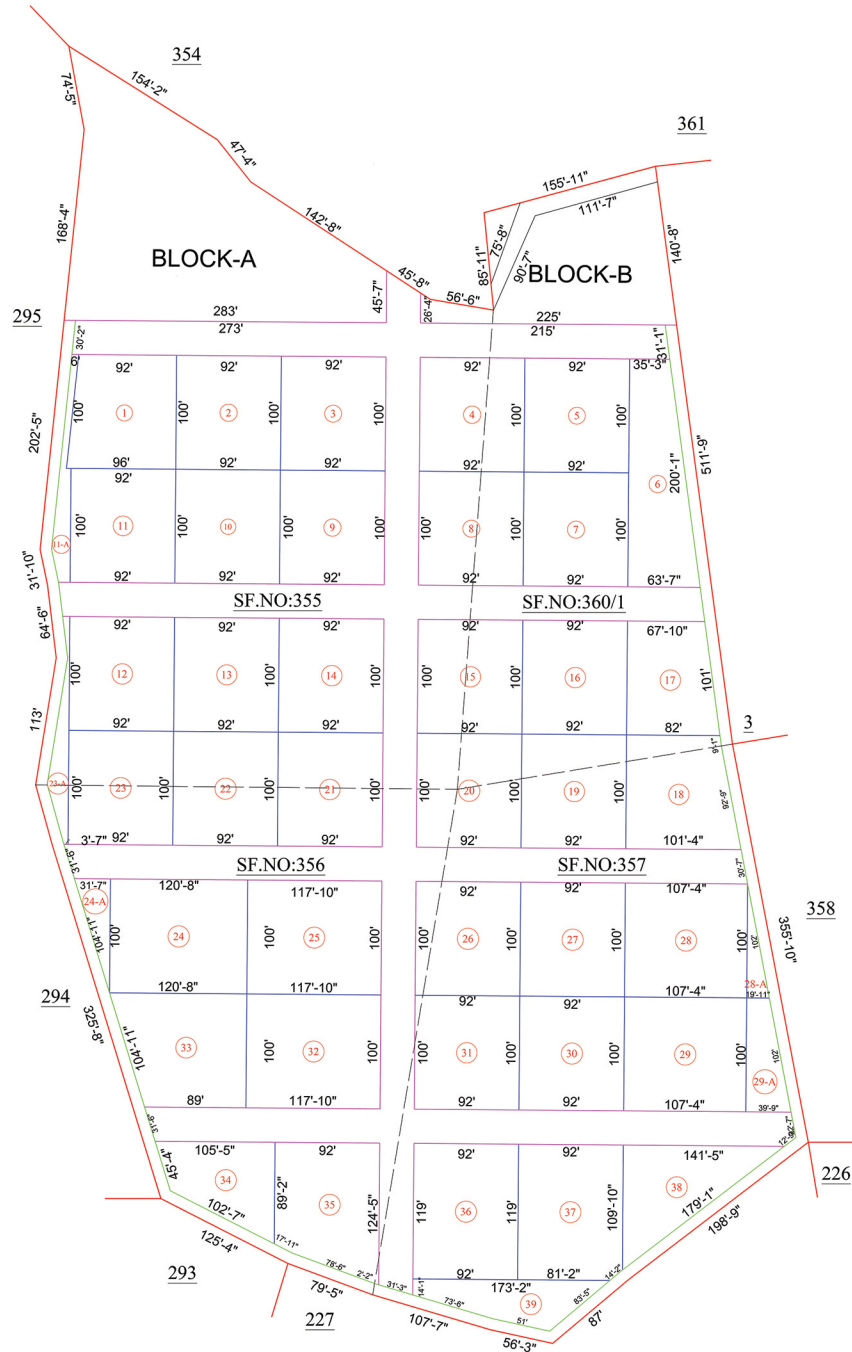
Solar panels, rainwater harvesting and sustainable building materials.

Ideal For

- Individuals seeking a holiday home to relax and unwind – far away from the maddening crowd.
- Investors who look for returns – Ancia will be a fantastic listing on Air-bnb or destination events like weddings and elite parties.
- Nature lovers & families seeking a unique home with a touch of the modern.
- Artists and writers looking for inspiration in every corner.

Site Map

The layout drawing showing the boundary details of a property in SF No 355,356,357 & 360 at Odanthurai village, Mettupalayam Taluk, Coimbatore District.



AREA TABLE			
SITE.NO	SQM	SQFT	CENTS
1	845.727	9103.41	20.9
2	854.97	9202.9	21.13
3	854.97	9202.9	21.13
4	854.97	9202.9	21.13
5	854.97	9202.9	21.13
6	918.891	9890.94	22.71
7	854.97	9202.9	21.13
8	854.97	9202.9	21.13
9	854.97	9202.9	21.13
10	854.97	9202.9	21.13
11	854.937	9202.54	21.13
11-A	176.835	1903.45	4.37
12	854.97	9202.9	21.13
13	854.97	9202.9	21.13
14	854.97	9202.9	21.13
15	854.97	9202.9	21.13
16	854.97	9202.9	21.13
17	696.363	7495.65	17.21
18	849.981	9149.2	21.01
19	854.97	9202.9	21.13
20	854.97	9202.9	21.13
21	854.97	9202.9	21.13
22	854.97	9202.9	21.13
23	854.97	9202.9	21.13
23-A	172.905	1861.15	4.27
24	1121.271	12069.36	27.71
24-A	146.871	1580.92	3.63
25	1095.324	11790.07	27.07
26	854.97	9202.9	21.13
27	854.97	9202.9	21.13
28	997.617	10738.35	24.66
28-A	92.397	994.56	2.28
29	997.617	10738.35	24.66
29-A	277.19	2983.67	6.85
30	854.97	9202.9	21.13
31	854.97	9202.9	21.13
32	1095.324	11790.07	27.07
33	974.4	10488.44	24.08
34	591.968	6371.94	14.63
35	921.496	9918.98	22.78
36	1017.151	10948.61	25.14
37	1012.501	10898.56	25.02
38	721.542	7766.68	17.83
39	453.203	4878.28	11.2
TOTAL	34840.85	375026.9	861.12
BLOCK-A	3626.424	39020.32	89.63
BLOCK-B	1836.216	19757.68	45.38
O/L	1987.733	21388.01	49.13
ROAD	8390.75	90284.47	207.38
TOTAL-H	15841.12	170450.5	391.53



Athika Infrastructure

Address : 49, 1st floor, T.V. Samy Road(East),
R.S.Puram
Coimbatore – 641 002.



www.athika.in



athikainfrastructures@gmail.com



70946 26034

SCAN FOR



LOCATION